

WIN-PAK® SE/PE with Galaxy Integration

Integrated Security Software Solution



WIN-PAK®SE/PE with Galaxy integration is the latest version of Honeywell's most comprehensive access control software. By combining the power of access control, digital video and intrusion into one powerful system, WIN-PAK SE or WIN-PAK PE with Galaxy integration improves scalability, capability and control.

WIN-PAK SE/PE with Galaxy integration provides a single user interface that integrates access control with video and intrusion to create a more robust platform with increased functionality. Functions that have traditionally been tied together through physical relays and input devices are now controlled logically. Full-scale system management of single or multiple locations is possible - you can move, control or share resources across multiple locations simply by logging on to a system.

WIN-PAK is easy to install and program using Quick Start Wizards which also offer advanced reporting capabilities that customers are demanding. Users can create customized reports or choose from a variety of predefined reports. E-mail capability has been added to allow reports and events to be sent via e-mail. Reports and events can be shown as easy-to-read text that provide all the content and detail that customers require.

FEATURES

- Integrate access control, digital video and intrusion integration using Honeywell's Fusion Series DVRs, and Galaxy G3 and Galaxy XL series control panels**
 - Arm or disarm with a card read
 - Record and playback access or intrusion events and alarms
 - Multiple camera control, including PTZ
 - Programmable camera presets
 - Synchronised video playback
 - Alarm video popup and user verification
 - Synchronised video
- Professional Access Control integration using NS2+, N-1000 and PRO2200 access control panels
- Manage cardholders through multiple locations
- Multilingual software; ask for available languages
- Available as single or five concurrent operator workstations or as Professional Edition (PE) for unrestricted number of workstations
- Quick start setup and configuration wizards
- Real-time alarm/event monitoring
 - 99 priority levels
 - Control and response, including acknowledge, clear, annotate, live video, recorded video
 - Manual override, lock and unlock doors, shunt/unshunt zones and input points
- Manual override of system functions
 - Lock and Unlock doors
 - Arm/disarm partitions and zone
 - Bypass/Un-Bypass Zones
- Generate predefined or customised reports using easy templates
- Schedule e-mail or printed reports
- CCTV control interface to most popular matrix switchers
- Schedule guard tours
- Enhance elevator control
- Global anti-passback processing
- Content-sensitive help screens
- Dynamic floor plans
 - Control devices
 - Floor plan linking
 - Acknowledge/clear alarms
 - Visual feedback
- Operating systems supported: Windows® Vista Enterprise, Windows® Vista Business, Windows® XP Professional SP2 and Windows® 2003 Server*

*SQL Server™ 2005 or SQL Server™ 2005 Express Edition must be loaded on the computer before WIN-PAK SE is installed.

** Minimum firmware requirements:

- Galaxy XL: 4.50
- Galaxy G3: 5.04 / 5.50
- Ethernet Module: 2.01

WIN-PAK® SE/PE with Galaxy Integration

Integrated Security Software Solution

BENEFITS



Seamless Integration

WIN-PAK SE/PE with Galaxy integration brings together Honeywell's WIN-PAK access control system, Galaxy intrusion control panel, Fusion DVRs and LobbyWorks™ Visitor Management System. The ability to integrate these technologies from one manufacturer now makes it easier for major enhancements to existing systems, or to significantly improve the operation of new security systems. This practically eliminates the confusion and compatibility issues brought on by different systems from many manufacturers.

Enhanced Security

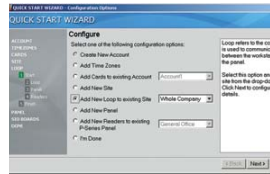


The integration with Honeywell's Fusion or Rapid Eye DVRs extends storage space and facilitates easy identification, retrieval and playback of events and alarms. Access or intrusion events can provide operator notification alerting users to view live video or easily retrieve video playback of access or intrusion events directly within WIN-PAK SE/PE.



No Need to Retrain

WIN-PAK SE/PE integrates with Honeywell products that have been trusted by customers for years. WIN-PAK, Galaxy and Fusion provide a familiar look and feel to existing installations and require little or no additional time for installation and programming.



Fast and Easy Setup

Setup is quick and easy using the WIN-PAK SE/PE quick start wizards. Wizards make programming simple by taking users step-by-step through installation and programming.



Increased Intrusion Function

Add WIN-PAK SE/PE to an existing Galaxy G3 or Galaxy XL installation and take advantage of the powerful functionality of the software. Enhanced functions include dynamic graphical floor plans, customised report generation for intrusion events and user actions, on-screen virtual keypad, real-time event and alarm reporting, and more.



Reduce False Alarms, Unauthorised Access

WIN-PAK SE/PE with Galaxy integration reduces unwanted alarms caused by improper keypad operation, incorrect codes or unauthorised access to sensitive areas. The reporting feature can be used to help businesses improve on their operating efficiencies.

CONFIGURATION

Upgradeable, scalable and modular structure

Complete scalability and a modular structure means that the solution will scale in line with the end user's needs. Irrespective of which system the user initially has, it is simple to add video, access or intrusion detection at a later date.

Scheduled Reporting

A reporting function means that, once configured, Report Templates can be recalled and scheduled to run automatically at the same time, hourly, daily, weekly or monthly. Scheduled reports can be delivered direct to a printer or sent via email direct to your desk.

Advanced Card Management

WIN-PAK SE/PE offers advanced card management over conventional access control systems. Features like Multiple

Cards per Badge Holder, Batch Add/Delete, Card Activation/Deactivate by Schedule, Card Holder Locate and Card Disposition provide greater control and security for customers. Integration with Galaxy means that Galaxy User Codes can also be managed.

Real-Time Alarm and Event Monitoring

WIN-PAK SE/PE offers sophisticated real-time monitoring of events and alarms as they occur. The software has 99 Priority Levels to allow for control and response of alarms including accessing Floor Plans, acknowledge and clear. Users can also provide notes on each alarm about the cause and response. Users can retrieve video playback of events generated from an alarm via the integration to Digital Video.

INTEGRATION CAPABILITIES

Honeywell's innovative WIN-PAK SE/PE with Galaxy and Fusion combines three leading products into a solution powerful enough to handle virtually any integrated security requirement. The unique combination of access control, video and intrusion also saves time and money by reducing training and labour.

Key Integration Features

- Grant access and disarm system on valid card read
- Arm system on valid triple card read
- View live video from up to 16 cameras simultaneously
- Valid/invalid cardholder verification
- Arm/disarm video verification
- Pop-up video on access or intrusion function
- Virtual Alarm Keypad
 - View intrusion control panel status
 - Galaxy keypad control through WIN-PAK software
- Live system control
 - Arm/disarm intrusion system
 - Multiple group control
 - Bypass/unbypass doors
 - Live camera view, including PTZ

Key Integration Benefits

- Save time and money by managing three separate systems with one easy-to-use software interface.
- Improve the level of security by eliminating user code sharing. Increase security by using a unique card to disarm a system and grant access at the door.
- WIN-PAK SE/PE software interface allows users to retrieve and play back alarms associated with intrusion and access control.

- Automated reporting allows users to send up-to-date reports on intrusion and access events hourly, daily, weekly or monthly.
- Reduce employee down-time by only requiring training on one system.
- Align WIN-PAK SE/PE with Galaxy integration with existing system needs for an added level of security.
- Expand to meet current and future needs. Start with access and add video or intrusion later as requirements change.

Typical Applications

- Office buildings
- Day care centres
- Pharmacies
- Light industrial
- Warehouses
- Schools/universities
- Hospitals/medical offices
- Restaurants
- Convenience stores
- Retail establishments
- Datacentres
- Multi-national businesses

CONFIGURATION



WIN-PAK® SE/PE with Galaxy Integration

Integrated Security Software Solution

ORDERING

Software for WIN-PAK STANDARD EDITION & PROFESSIONAL EDITION (EMEA Edition)

WPSEE	WIN-PAK SE Access Control Software, 1 User
WPSEU5E	WIN-PAK SE Access Control Software, 5 Users
WPPEE	WIN-PAK PE Access Control Software, Unrestricted number of Users

Upgrades from WIN-PAK 2005

UWPPESEE	Upgrade WIN-PAK (PRO) 2005 to WIN-PAK SE or PE (Same number of Users)
-----------------	---

Software for GALAXY EDITIONS FOR WIN-PAK SE/PE (EMEA Edition)

WPSEGE	WIN-PAK SE Access Control Software with Galaxy Integration, 1 User
WPSEU5GE	WIN-PAK SE Access Control Software with Galaxy Integration, 5 Users
WPPEGE	WIN-PAK PE Access Control Software with Galaxy Integration

Galaxy Upgrades from WIN-PAK 2005

UKWPSEGE	Upgrade WIN-PAK 2005 1 user to WIN-PAK SE Galaxy Add-On, 1 User
U5WPSEU5GE	Upgrade WIN-PAK 2005 5 user to WIN-PAK SE Galaxy Add-On, 5 User
UPWPPEGE	Upgrade WIN-PAK PRO 2005 to WIN-PAK PE Galaxy Add-On

Other upgrades available.

WIN-PAK® is registered trademark of Honeywell International Inc.
Microsoft®, Windows® Server 2003®, Windows® XP and Windows® 2000
are registered trademarks of Microsoft Corporation.

Honeywell Systems Group

Honeywell Access Systems
Charles Avenue
Burgess Hill
West Sussex.
RH15 9UF
01444 251180
01444 871074

www.honeywell.com/security/uk



HAS-WPSE-01-EN-0507-DS-COE
May 2007

© 2007 Honeywell International Inc.